



# ColorLogic

## PRODUCT OVERVIEW & INSTALLATION GUIDE

## Product Overview and Installation Guide

for ColorAnt, CoPrA and ZePrA

Copyright © 2024 ColorLogic GmbH.

All rights reserved. Reprinting of this information – in whole or in part – is only permitted with our express, written consent.

ColorLogic GmbH accepts no responsibility whatsoever for the accuracy of the information contained herein, insofar as it relates to details and descriptions of standards and third-party products.

Adobe, Acrobat, Photoshop, Postscript and PDF are registered trademarks of Adobe Systems Inc. Windows, Windows XP, Vista, Windows 7, Windows 8, Windows 10, Windows 11 are either registered trademarks or trademarks of Microsoft Corporation in the USA and/or other countries. Apple, Macintosh, Power Macintosh, macOS, MacOSX and ColorSync are trademarks of Apple Computer Inc. in the USA and/or other countries. PANTONE® and other Pantone trademarks are the property of X-Rite Inc. All other trademarks are the property of the respective owners. Licensed under Sun Chemical Corporation [Sun Chemical's patented technology enables the communication of a consistent, digital description of the desired appearance of a product] – U.S. Patent Nos. 7,034,960; 7,202,976; 7,268,918; 7,417,764 (and their foreign equivalents). ©Pantone LLC, 2012. All rights reserved. All other trademarks are the property of the respective owners.

6th Edition, January 2024

Licensing, Privacy Policy and Terms of Service can be found at  
<https://colorlogic.de/en/terms-and-conditions/>  
<https://colorlogic.de/en/eula/>  
<https://colorlogic.de/en/privacy-policy/>  
<https://colorlogic.de/en/legal-notice/>

# >> COLORLOGIC APPLICATIONS

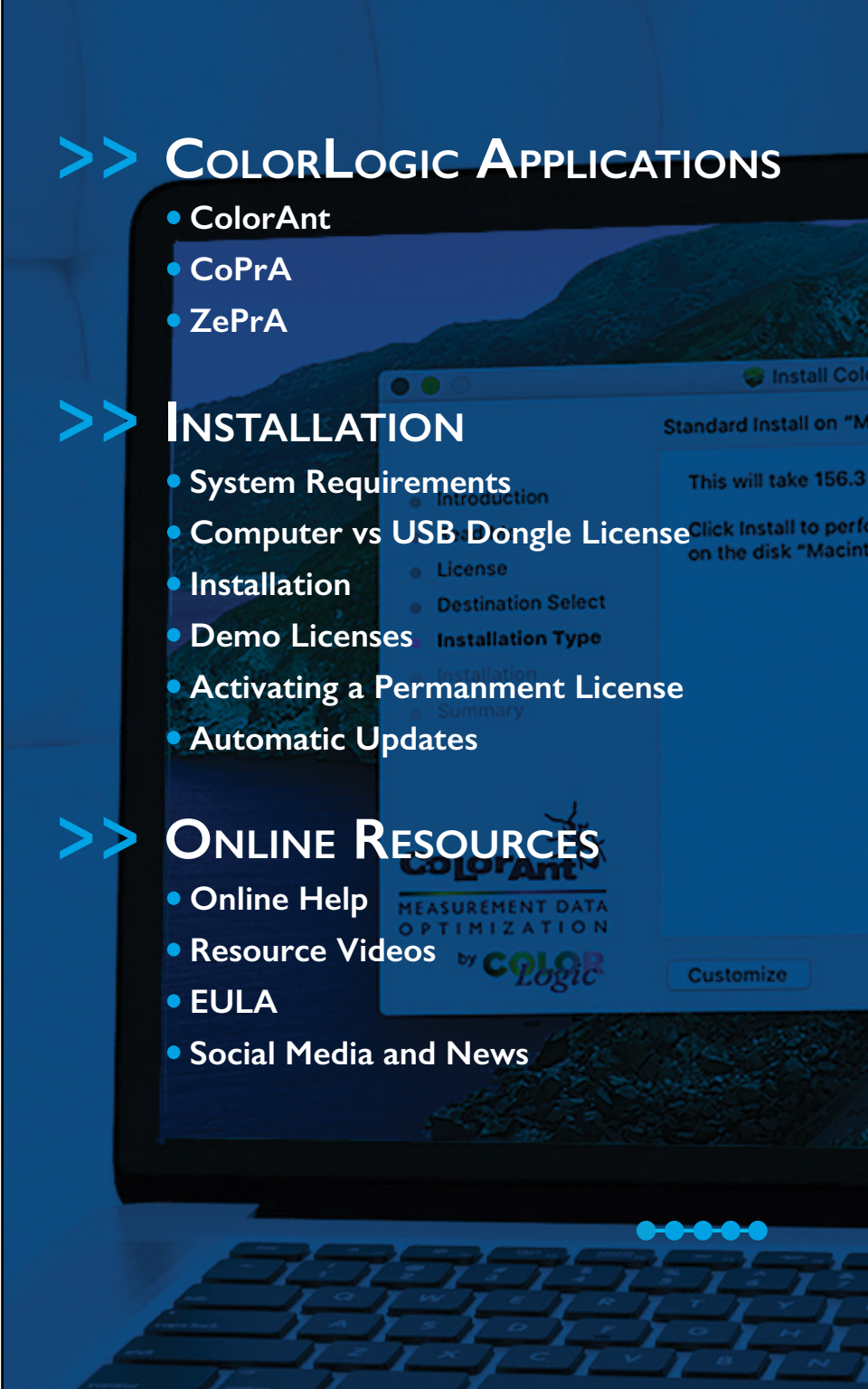
- ColorAnt
- CoPrA
- ZePrA

# >> INSTALLATION

- System Requirements
- Computer vs USB Dongle License
- Installation
- Demo Licenses
- Activating a Permanent License
- Automatic Updates

# >> ONLINE RESOURCES

- Online Help
- Resource Videos
- EULA
- Social Media and News





**COLORANT** is an award-winning, easy-to-use tool to manipulate, analyze and optimize RGB, CMYK, Multicolor and ECG measurement data prior to profiling. Use ColorAnt to create customized measurement charts, measure color patches, and to check measurement data prior to profiling to avoid issues such as mis-measurements or inhomogeneous data.

ColorAnt can be used to average several measurements together when required before creating a profile. The quality of ICC profiles depends strongly on the quality of the measurement data used to create them. Improve profile quality by adding analysis and optimization of measurement data with ColorAnt.

## ColorAnt PACKAGES

ColorAnt M	ColorAnt L	ColorAnt XL
Support for data up to 4C	INCLUDES ALL FEATURES OF <b>M+</b>	INCLUDES ALL FEATURES OF <b>L+</b>
<b>Data Import/Export</b> Custom Chart Generation, Export Chart, MeasureTool, Reporting	<b>Support for multicolor data up to 15C*</b> Chart Generation, Edit Primaries, Color Merge	Command Line Interface (CLI)
<b>Editing</b> Redundancies, Correction, Smoothing, White and Black Correction, Brightener, Tone Value, Rescale, Edit Primaries, Color Editor	<b>Proof Evaluation Tool</b> For Contract Proof, Print Validation, G7® and PSO ("Side-by-side" and "Media Relative")	
<b>Merging and Conversion</b> Averaging, Link, ICC Transformation, CIE Conversion	<b>Embed CxF/X-4</b> Embeds spectral spot colors in PDF files	
<b>Viewing, Comparing, Save History Log</b>		
<b>ICC Transformation, View and Compare, also works with multicolor data</b>		

\* For best quality we recommend no more than 9C.

## ColorAnt's Tools



### Auto

Correct measurement data automatically



### Workflow

Apply preprogrammed workflow to files



### Custom Chart

Create custom test charts



### Export Chart

Export custom charts for printing and measuring



### Measure

Measure printed charts or ambient light



### Report

Generate detailed reports on measurement data



### Embed CxF/X-4

Embed CxF/X-4 spectral data in PDF files



### Redundancies

Correct redundant patches in measurement data



### Correction

Corrects and detects faulty measurements and inconsistent data



### Smoothing

Smooth and correct uneven curves



### White/Black Correction

Apply manual corrections to white and black areas



### Brightener

Correct data for optical brighteners



### Tone Value

Correct measurement data to a specific set of curves



### Rescale

Recalculate data to a different color chart



### Edit Primaries

Add, remove or exchange primaries and recalculate measurement data



### Color Editor

Edit colors to match a reference file



### Averaging

Average several data sets into one data set



### Link

Combine multiple charts into one measurement file



### ICC Transformation

Use ICC device and DeviceLink profiles to test impact on data



### CIE Conversion

Change the standard observer illumination of data sets



### Evaluation

Evaluate proof measurement data according to various industry standards

>> For more info on ColorAnt:

<https://onlinehelp.colorlogic.de/en/colorant-main-help/>

## THE ULTIMATE PROFILING SOLUTION IN ANY COLOR SPACE



**CoPrA** is the control center for any ICC color profiling task. CoPrA creates high quality printer, DeviceLink and Savelnk profiles with a user friendly interface for any color space and printing process. Offering some of the most intelligent and advanced profiling tools in the industry today, CoPrA can be even used for industrial printing processes such as textiles, ceramics, flexo and others.

Save time and money with its wide range of features to optimize print production. A must-have tool for any color management professional to capture the characteristics of their presses and printers or to implement high quality extended gamut printing.

### › CoPrA's Tools



#### New Printer Profile

Create printer profiles



#### Linearization

Optimize primary color gradations



#### Update Profile

Update profiles using optimized measurement data



#### Recalculate

Recalculate DeviceLink profiles with a different profile



#### DeviceLink

Create DeviceLink profiles from standard ICC profiles



#### Image Conversion

Convert image files for profile evaluations



#### Editing

Create DeviceLinks using individually modified test charts



#### Profile Manager

Manage profiles in one convenient place



#### Savelnk

Create ink saving DeviceLink profiles



#### Batch Overview

Monitor and manage profiling jobs or reports



#### Iterate

Improve existing DeviceLink profiles

### CoPrA PACKAGES

CoPrA BASIC	CoPrA M	CoPrA L	CoPrA XL	CoPrA XXL
STANDARD FEATURES	INCLUDES ALL FEATURES OF Basic PACKAGE +	INCLUDES ALL FEATURES OF Basic & M PACKAGES +	INCLUDES ALL FEATURES OF Basic, M & L PACKAGES +	INCLUDES ALL FEATURES OF Basic, M, L, & XL PACKAGES +
RGB, Gray, CMYK Profiles with presets	Create profiles with custom settings	DeviceLink Creation	Savelnk Profiles Create Savelnk DeviceLinks	Edit DeviceLinks with up to 15 channels
Profile updating with presets	ColorAnt M Analyze & Optimize Measurement data	DeviceLink Editing & Iteration		Multicolor Profiles Create and update profiles & DeviceLinks
Profile Manager PDF reporting		DeviceLink Linearization & Recalculation		ColorAnt L Analyze & Optimize Measurement data

### CoPrA ADD-ON MODULES

CoPrA MODULE	FEATURES
DeviceLink Profiling	DeviceLinks, Iteration and Recalculation for Gray, RGB, CMYK
DeviceLink Editing	Creates DeviceLink profiles based on Editing for Gray, RGB, CMYK
Savelnk	Create Savelnk DeviceLinks
Multicolor	Multicolor support for Printer and/or DeviceLink profiling and/or Editing
Multicolor Flexible	Enables Multicolor Support for CoPrA and ZePrA

>> For more info on CoPrA:

<https://onlinehelp.colorlogic.de/en/copra-main-help/>



SMART COLOR SERVER TO AUTOMATE  
YOUR COLOR WORKFLOW



**ZePrA Smart Color Server** is a full-featured color server that optimizes PDF printing data and image files such as PSD, TIFF and JPEG via DeviceLink profiles. Create customized configurations and queues to automate day-to-day color management tasks. ZePrA's easy-to-use interface simplifies the process of custom color conversions with SmartLink and can be integrated into an existing workflow for immediate results.

Our high quality color conversion and optimization of CMYK, RGB, Grayscale, Multicolor and ECG printing data is achieved through DeviceLink profiles built on-the-fly, as well as intelligent PDF processing. Our sophisticated spot color rendering uses state-of-the-art spectral color prediction technology, supports CxF/X-4, and allows production of proofs with high color accuracy. ZePrA even makes it easy to set up several workflows such as color conversion, normalization, saving on ink and proofing with the help of the Auto Setup Wizard.

## ZePrA's Tools



### Auto Setup

Create workflows with ZePrA's Auto Setup Wizard



### Save Ink Report

Generate an overall ink saving report



### Overview

View queues, pending jobs and processed jobs



### Extract ICC Profile

Extract ICC Profiles from images and PDF files



### Configuration

View and customize processing settings



### Spot Color Libraries

Manage libraries and edit spot colors



### Queues

Manage print jobs



### Gradients

Manage and create tone value correction curves



### Spot Color Report

Check the accuracy of spot color conversions prior to printing



### Profile Assignments

Use existing or dynamically created DeviceLinks for file conversions

## ZePrA PACKAGES

ZePrA ENTRY	ZePrA BASIC	ZePrA L	ZePrA XL	ZePrA XXL
STANDARD FEATURES	INCLUDES ALL FEATURES OF ENTRY PACKAGE +	INCLUDES ALL FEATURES OF ENTRY & BASIC PACKAGES +	INCLUDES ALL FEATURES OF ENTRY, BASIC & L PACKAGES +	INCLUDES ALL FEATURES OF ENTRY, BASIC, L & XL PACKAGES +
Hot Folder Processing	PDF Conversion	Multi threading Support	SaveInk Add-on SmartLink	Multicolor Support
Image Conversion	PDF Flattening	Gradation	Push-2-ZePrA v2 Photoshop extension	Advanced Spot Color Conversion
Automatic Setup Wizard	CLI Required for Enfocus Switch	SmartLink Create DeviceLinks on-the-fly incl. DeviceLink Iteration Wizard	CoPrA XL SP*	PantoneLIVE® Support**
Photoshop PSD Layers Support	Basic Spot Color Conversion	CoPrA L SP*		Spot Color Iteration Wizard
Proofing				CoPrA XXL SP*

## ZePrA ADD-ON MODULES AND REQUIREMENTS

ZePrA MODULE	FEATURES	REQUIREMENTS
Gradation Module	Create correction curves	Requires ZePrA
SmarmLink Module	CoPrA SP* Create DeviceLinks on-the fly incl. DeviceLink Iteration Wizard	Requires ZePrA
SaveInk Module	Enables SaveInk Module for CoPrA SP*	Requires ZePrA Requires SmartLink
Spot Color Module	Advanced Spot Color Conversion, PantoneLIVE® support**, Spot Color Iteration	Requires ZePrA
Multicolor Module	Enables Multicolor Support Spot color module included	Requires ZePrA Requires CoPrA SP
Multi-threading	Multi-core file processing	Requires ZePrA
Push-2-ZePrA v2 Photoshop extension	Drive ZePrA from Photoshop with one or multiple clients	Requires ZePrA

\* SP = Serialized Profiles. The profiles created with SmartLink are encoded with the serial no. of the ZePrA color server and can only be used on the same system. ColorAnt not included.

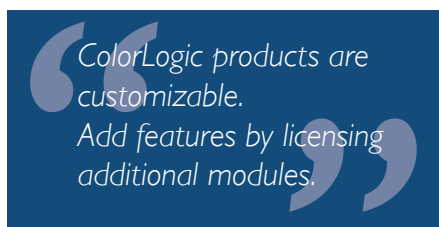
\*\* A PantoneLive® Production License is required.

>> For more info on ZePrA:

<https://onlinehelp.colorlogic.de/en/zepra-help-main/>

ColorLogic applications are flexible to adapt to ever changing profiling needs. All applications can be used standalone or as a full suite and are sold in packages that are customizable. Advanced features, such as Multicolor, are available for all applications as needed. If you are interested in purchasing a ColorLogic product please contact a dealer in your region.

<https://colorlogic.de/en/contact/>



✓ OPTIMIZE  
✓ PROFILE  
✓ AUTOMATE

## >> INSTALLATION

### SYSTEM REQUIREMENTS

#### macOS:

macOS® 14 Sonoma  
macOS® or macOS® Server Version 10.15 and higher  
ColorAnt, CoPrA and ZePrA run on Apple M1 chip systems

#### Windows:

Microsoft® Windows® 11  
Microsoft® Windows® 10

**Specifics:** ColorAnt, MeasureTool, CoPrA and ZePrA run in 64-bit mode

**Specifics:** ColorAnt, MeasureTool, CoPrA and ZePrA run in 64-bit mode

### COMPUTER VS USB DONGLE LICENSE

**Computer-based Licenses** are tied to the computer on which the software (CoPrA, ZePrA or ColorAnt) is installed. Computer-based licenses are also required if the computer lacks a USB port or space for a USB dongle, i.e., a rack server.

**USB Dongle Licenses** are serialized to the dongle and may contain multiple applications. The USB dongle communicates with the assigned software license and enables the software to be used on different computers. To assign the license to the USB dongle, it must be connected to the computer before starting the software.

### INSTALLATION

Insert the dongle, CD, or download the application direct to the targeted computer. To download an application go to our homepage <https://colorlogic.de>, then click the **DOWNLOAD** button on the upper-right of the screen, register your information, then click the **DOWNLOAD** button again for access to all downloadable applications.

Begin installation by double-clicking on the installation package. The default installation directory for the application is either in the folder **Applications** (macOS) or **Programs** (Windows).

After accepting the Software License Agreement, select the destination volume and choose between a **Standard Installation** or a **Custom Installation**. Standard Installation installs all components (e.g., the Measure Tool in CoPrA or the DLS Manager in ZePrA as described below).

**ColorAnt:** The integration of ColorAnt (or ColorAnt's Measure Tool with CoPrA) allows to measure test charts for profile creation from within CoPrA.

**ZePrA:** The DLS Manager will be installed, and ColorAnt's Measure Tool can be used for measuring of spot colors.

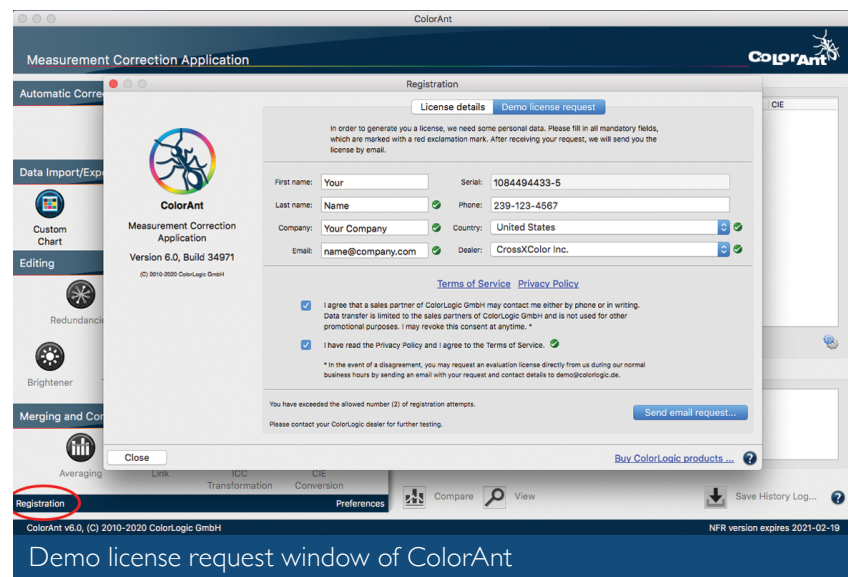
**DLS-Manager:** Allows installation of **DeviceLink Sets**. DeviceLink sets are DeviceLinks that will perform a variety of standard color management tasks. Please see our **Online Help** for a complete list of sets and profiles.

## DEMO LICENSES

ColorLogic offers 14-day trial licenses for all applications, allowing the user to evaluate the application features and performance.

### Requesting a Demo License

1. Click on **Registration** in the lower-left corner of the sidebar.
2. Click on the tab **Demo license request**.
3. Enter all the required information.
4. After selecting the country, the software shows a list of available dealers in that region. Select a dealer and click on **Send direct request**. The demo license will be sent to your specified email address within a few minutes.
5. Save the license file (\*.lic) contained in the email on the targeted computer that the application is installed.
6. Click on **Registration** in the lower-left corner of the sidebar and the **License details** window will appear.
7. Click on **Load**, then select the license file and click on **Open**. If installed correctly, the expiration date will appear under the serial number. Your demo is ready to use.



## Restrictions with Demo Licenses

**ColorAnt:** Creates encrypted files which can only be used by ColorLogic products. All measurement reports have a DEMO watermark. **Compare** and **View** features and saving user data are not available. **CXF-X4 Export, Evaluation** and saving in formats other than "txtdemo" is also not possible.

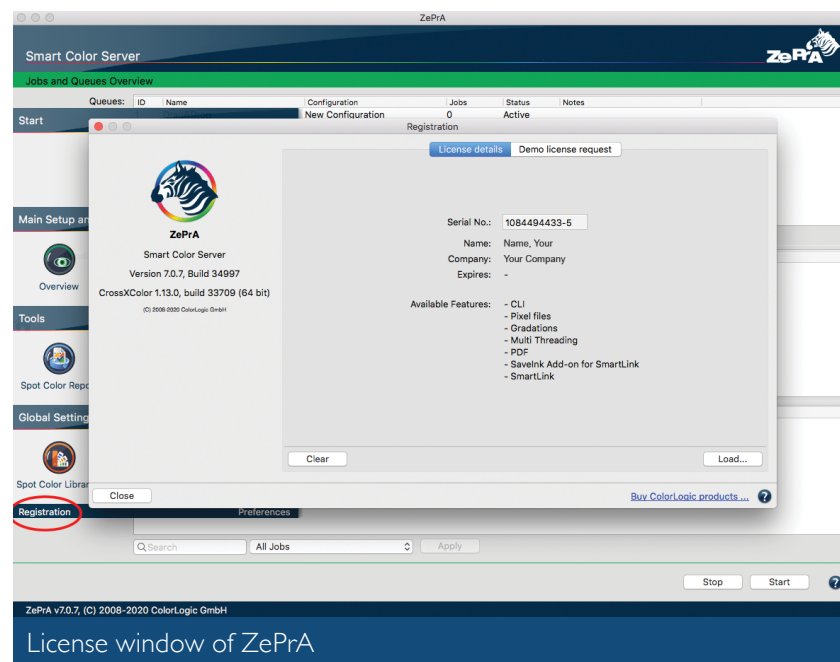
**CoPrA:** All profiles created with a demo license are encrypted and can only be used in ColorLogic applications.

**ZePrA:** All files converted with a demo license are watermark protected. If it becomes necessary to test ZePrA without the watermark during the test period, contact your dealer for instructions.

## ACTIVATING A PERMANENT LICENSE

You will need to provide the serial number of your application to your dealer to be issued a license. To find the serial number, launch the application and select **Help > Register**. The serial number will appear.

1. Your dealer will send you your license via email.
2. Save the license file (\*.lic) contained in the email on the targeted computer that the application is installed.
3. If you have a dongle license, plug in the dongle first then start the software.

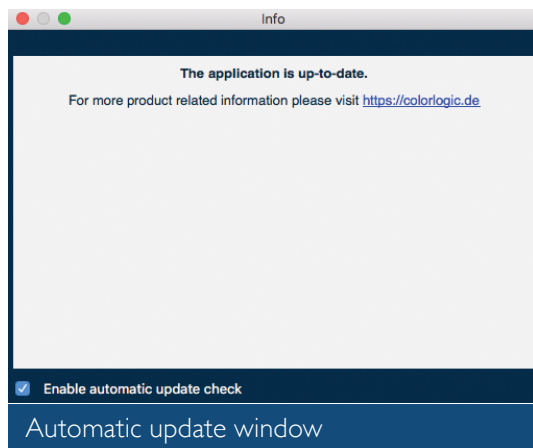


If you have a computer license, make sure the serial number of the license file is the same as the serial number of the application installed on the computer.

4. Open the application, click on **Registration** in the lower-left corner of the sidebar, or click on **Help > Register** and the **License details** window will appear.
5. Click on **Load**, then select the license file and click on **Open**. If installed correctly a list of **Available features** will appear under the expiration date. Your application is ready to use.

## AUTOMATIC UPDATES

ColorLogic applications are set to automatically search for updates at program start once a day. To change the default setting, go to **Help > Check for update**, and deselect **enable automatic update check**. To manually check for updates, go to **Help > Check for update**.



## >> ONLINE RESOURCES



### ONLINE HELP

Use the **Online Help** for answers to your questions, as well as instructions and troubleshooting information. The question mark **?** located in the bottom-right dialog launches the **Online Help**. This is context-sensitive, so if you click **?** in the **Redundancies** tool, the **Redundancies** online help page opens. The **Online Help** also contains detailed information about the various functions of each application.

<https://onlinehelp.colorlogic.de/en/>

## WHAT'S NEW?

For the latest updates and new features in each application:

**ColorAnt:** <https://onlinehelp.colorlogic.de/en/whats-new-in-colorant/>

**CoPrA:** <https://onlinehelp.colorlogic.de/en/whats-new-in-copra/>

**ZePrA:** <https://onlinehelp.colorlogic.de/en/what-new/>

## RESOURCE VIDEOS

Want to learn more? Discover our YouTube channel for a variety of videos on overviews on products, tips, and in depth training. Subscribe to receive the latest tips and information from ColorLogic.

<https://www.youtube.com/crossxcolor>

## END USER LICENSE AGREEMENTS

All end users are required to follow our End User License Agreement (EULA). For full details go to:

<https://colorlogic.de/en/eula/>

## SOCIAL MEDIA AND NEWS

Join one of our social media platforms to get up to the minute news on ColorLogic doings and happenings, or go to our website and register to join our newsletter mailing list.

<https://colorlogic.de/en/register/>







**ColorLogic GmbH**, part of Hybrid Software Group, is an award-winning, global company committed to providing the most advanced software technology in color management. We stay ahead of the industry by continually innovating technology to solve the industry's toughest color management challenges. A strong relationship with our partners and team create a winning solution for our customers worldwide.



[www.colorlogic.de](http://www.colorlogic.de)  
[info@colorlogic.de](mailto:info@colorlogic.de)

